

**Children and Young People's
Scrutiny Committee**



26 September 2019

**Local Safeguarding Children Board
Annual Report 2018/19**

**Report of Michael Banks, Independent Chair Durham Safeguarding
Children Partnership**

Electoral division(s) affected:

Countywide

Purpose of the Report

- 1 To present the final Local Safeguarding Children Board (LSCB) Annual Report 2018/19. This is the final report prior to transitioning to the new statutory partnership arrangement known as the Durham Safeguarding Children Partnership (DSCP).

Executive summary

- 2 In 2018 partner agencies of the Durham Local Safeguarding Children Board undertook a process of transition to new local safeguarding arrangements that were compliant with statutory guidance, Working Together to Safeguard Children 2018.
- 3 Throughout this period of transition an Executive Group was established but the Board and the LSCB Business Team continued to work in parallel to the new arrangements, progressing the work of the safeguarding partnership and continuing to fulfil all of its statutory functions.
- 4 The LSCB Annual Report 2018/19 demonstrates the extent to which the functions of the Durham Local Safeguarding Children Board, as set out in the earlier national statutory guidance 'Working Together to Safeguard Children' (March 2015), have been effectively fulfilled.
- 5 The report describes the work undertaken against the LSCB's 2018-19 priorities and describes local governance arrangements and links to other strategic partnerships across County Durham.

- 6 The report provides an overview of performance monitoring as well as providing a summary of the use of restraint in secure centres; Serious Case Reviews; Child Death Reviews; and the LSCB's provision of multi-agency training provision.
- 7 This Annual Report is the last for the LSCB and the first for the Independent Chair of the Board. The report includes achievements in LSCB priorities, information relating to the Joint Targeted Area Inspection (JTAI) which occurred in 2018 and the transition to the DSCP. This report will be shared with partners and made available on the DSCP website.

Recommendation(s)

- 8 Children and Young People's Overview and Scrutiny Committee is recommended to:
 - a) Note the content of this report.
 - b) Endorse the 2018/19 Annual Report of Durham Local Safeguarding Children Board.

Background

- 9 Durham Local Safeguarding Children Board (LSCB) was a statutory body established under the Children Act 2004. It was independently chaired (as required by statute) and consisted of senior representatives of all the principle stakeholders working together to safeguard children and young people in County Durham.
- 10 The LSCB's primary responsibility was to provide a way for local organisations that have a responsibility in respect of child welfare, to agree how they work together to safeguard and promote the welfare of children in County Durham and to ensure that they did so effectively.
- 11 Statutory Guidance from Working Together to Safeguard Children (2015) required each Local Safeguarding Children Board to produce and publish an Annual Report evaluating the effectiveness of safeguarding in the local area.

Transition to New Arrangements

- 12 The LSCB, in accordance with statutory guidance, transitioned to new safeguarding arrangements during 2018/19. The transition project ensured that the new partnership was compliant with legislation and able to fulfil its responsibilities.
- 13 During the transition period an Executive Group was established, and Safeguarding Partners identified the Relevant Agencies required to support local safeguarding arrangements. The Transition Project co-ordinated five work streams: Governance, Data and Legal; Serious Case Reviews; Child Death Overview Panel; Performance and Quality; Training and Communications.
- 14 A report outlining the transition to new safeguarding arrangements was sent to Cabinet for approval in April 2019.

Reducing Child Sexual Exploitation

- 15 The LSCB continued to facilitate a multi-agency Missing and Exploited Group (MEG) sub group. This group has reported that funding has been secured in relation to ERASE and PCSOs. The MEG has joined with the equivalent group in Darlington and will be re-named Child Exploitation Group to reflect its wider focus of County Lines and Modern Day Slavery.
- 16 The LSCB training programme increased the reach of the Exploitation and Grooming and partner training including bus companies and fast food outlets for the first time. Partners also reported progress relating to operations Artemis and Makesafe disrupting offenders and targeting hotspot locations.

Working Together

- 17 During 2018/19, the Working Together sub group have focussed on the efforts of partners seeking to reduce the average length of time a neglect case is 'live/open', to increase the timeliness of Initial Health Assessments

submitted for Looked After and increase the number of recorded challenges in cases.

- 18 The Working Together group also commissioned a survey of practitioners, undertaken by the LSCB Business Team, and used the learning to review and revise several key documents and operational tools available from the LSCB website.

Tackling Neglect

- 19 The Neglect sub group, in conjunction with Public Health England, established a working group to raise awareness of the impact of poor oral health and dental neglect. The Neglect group identified the need to create a pathway for children who miss medical appointments to raise awareness of neglect by changing the recorded event from “Did Not Attend” to ‘Was Not Brought’ and identifying subsequent action.
- 20 Partners shared progress on initiatives relating to tackling neglect such as the review and relaunch of the Home Environment Assessment Tool and the introduction of the Signs of Safety practice model. This model addresses the needs of children and families by identifying their strengths and supporting their development to improve the wellbeing of children affected by Neglect.

Empowering Young People

- 21 The Empowering Young People sub group is a new group bringing together a range of partners to create a ‘scorecard’ to enable services to define and develop improvements in their service approaches to engaging with young people.
- 22 The group looked at identifying what is required to increase confidence in young people who have safeguarding concerns, to improve the recognition of current engagement practice and improve the influence of the voice of the child in processes such as child protection conferences. To increase young people’s awareness of safeguarding issues a safeguarding engagement module was co-produced between local authority officers, partner agencies, teachers and young people in schools.
- 23 The LSCB renewed its subscription to the Investors in Children recognition scheme and the Empowering Young People group identified that there was greater scope for the development of initiatives that encourage meaningful participation by children and young people in 2019/20, ensuring feedback from young people fed into the work of the new partnership arrangements.

Professional Challenge

- 24 Durham LSCB have instigated five Serious Case Reviews in 2018/19 and published one Serious Case Review Report. The LSCB has introduced a series of short documents called 7-Minute Briefings, to improve the communication of learning from Serious Case Reviews. The Annual Report identifies the following recurrent themes of published serious case reviews:

- Bruising / Injuries to non-mobile babies
 - Sexually Harmful Behaviour
 - Non-compliance with Child Protection Procedures
 - Blockages in Communication and Information Sharing
 - Lack of Holistic and Robust Assessments
 - Lack of Professional Curiosity and Triangulation of Information
- 25 The LSCB hosts an annual Serious Case Review learning conference to share learning and improve understanding of issues, concerns and themes identified.
- 26 The Child Death Overview Panel for Durham and Darlington publish a separate annual report regarding key learning from child deaths and the completion of recommendations following reviews. In 2018/19 there were 38 sudden or unexpected child deaths in Durham.
- 27 Preparations were made for the implementation of new Child Death Review arrangements from April 2019.

Performance Monitoring and Quality Assurance

- 28 The LSCB Business Team provided quarterly performance reporting to the LSCB based on a range of indicators identified by partners. The indicators reported related to the LSCB's priorities and this was supported by single and multi-agency auditing to review practice in relation to CSE, strategy meetings and child protection plans.
- 29 The LSCB also completed a "Section 11" audit which contained more than 5600 separate pieces of information including responses from more than 138 schools and academies from across County Durham. 90% of the schools who contributed to the Section 11 said that they used the audit to prepare for their own Education reviews. Agencies identified a total of 63 separate actions which, with the findings of the audit, were compiled into a report and submitted to the LSCB.
- 30 The LSCB has responsibility for ensuring multi-agency participation in the completion of the JTAI Action Plan created after the multi-agency safeguarding review on the theme Domestic Abuse. Findings from the JTAI inspection, which includes inspectors from Ofsted, Care Quality Commission (CQC), Her Majesty's Inspectorate of Constabulary (HMIC) and Her Majesty's Inspectorate of Probation (HMIP), led to more than 100 actions being identified to address specific areas for improvement.
- 31 The LSCB also monitors, through the Quality and Performance Group, the use of restraint at Aycliffe Secure Services Centre. There was a total of 520 incidents which required restraint during 2018/19 resulting in 94 injuries. This is a slight reduction compared to the previous annual report and has been achieved during a period of increased occupation at the Centre.

Policy and Procedures

- 32 The LSCB continues to provide six-monthly reviews to maintain the multi-agency procedures and ensure the information reflects local and national changes. The Child Death Overview Panel has been reviewed to include a GP at each meeting, and lay member engagement during thematic reviews.
- 33 Procedures updated in 2018/19 were:
- Tackling Neglect Strategy
 - Neglect Practice Guidance
 - Thresholds Document
 - Children's Services Referral Form (New)
 - Home Environment Risk Assessment Tool (HEAT) and Guidance
 - HEAT Analysis and Action Plan (New)
 - Children and Families Outcomes Framework and Practice Toolkit

Training and Communication

- 34 The LSCB offered 10 core courses in 2018/19 as part of the multi-agency training programme and 22 bespoke training events were delivered to single agencies. A total of 98 multi-agency training events were delivered and attended by a total of 1,854 with 93% of attendees marking the training as good or excellent.
- 35 The LSCB provide access to a full range of e-learning courses and in 2018/19, 6,665 e-learning courses have been completed with 97% of those completing evaluations stated they would recommend the course to a friend or colleague. An analysis of overall training impact showed that 66% of participants believed that training provided by the LSCB had improved outcomes for the children and families.
- 36 The LSCB Website is the main communication channel and access point for local safeguarding information and materials. Pages on the website have been viewed more than 14,137 times by more 27,000 users.

Conclusion

- 37 The LSCB Annual Report 2018/19 is the final report of the Local Safeguarding Children Board and presents information to show how functions of the LSCB, as set out in the earlier national statutory guidance 'Working Together to Safeguard Children' (March 2015), and the agreed priorities have been effectively addressed.

Background Papers

Appendix 1: Implications

Legal Implications

Durham Local Safeguarding Children Board (LSCB) was a statutory body established under the Children Act 2004. Working Together to Safeguard Children 2015 (Statutory Guidance) requires each Local Safeguarding Children Board to produce and publish an Annual Report evaluating the effectiveness of safeguarding in the local area

Finance

Yearly financial contributions to Durham LSCB are received from partner agencies and are detailed in the LSCB Annual Report.

Consultation

Consultation with partner agencies and stakeholders has been undertaken as part of the development of the LSCB Annual Report.

Equality and Diversity/ Public Sector Equality Duty

The LSCB Annual Report identifies the actions to safeguard the needs of vulnerable children and young people.

Crime and disorder

The LSCB Annual Report reflects priorities and action that impact positively on crime and disorder in County Durham. The report shows effective partnership working with the Safe Durham Partnership.

Staffing

The priorities identified in the LSCB Annual Report will be delivered using existing resources. Durham County Council will contribute to the delivery of the priorities in partnership with other responsible authorities.

Accommodation

No adverse implications.

Risk

No adverse implications.

Disability Issues

No adverse implications.

Durham

Safeguarding Children Partnership



Annual Report

2018 - 2019

Safeguarding Children
In County Durham

www.durham-scp.org.uk

Safeguarding is everyone's responsibility

Contents

1. Foreword by Independent Chair	11
2. Introduction	12
3. Local Data	13
Local Safeguarding Data 2018/19 (Provisional).....	14
4. Governance and Structure	15
Local Safeguarding Children Board.....	15
Consultation with Children and Young People.....	16
Working across Partnerships	17
5. Achievements against 2018/19 Priorities.....	18
Professional Challenge	18
Examples of Professional Challenge.....	19
Progress on LSCB priorities 2018/19.....	20
LSCB Priorities 2018/19	20
Priority 1 – Reducing Child Sexual Exploitation.....	20
Priority 2 – Working Together	22
Priority 3 – Reducing Neglect	23
Priority 4 – Empowering Young People.....	24

6. Performance Monitoring and Quality Assurance	25
Multi-agency Audits	26
Joint Targeted Area Inspections	27
Restraint	27
Serious Case Reviews	29
Policy and Procedures.....	30
7. Training and Communication	31
Marketing and Communications Activity	32
8. Future Priorities.....	33
Appendix 1 – LSCB Membership	34
Durham LSCB Membership	34
LSCB Advisors	35
Contact Details.....	35
Appendix 2 – LSCB Staffing and Budget	36
Staffing	36
LSCB Budget.....	36

1. Foreword by Independent Chair

“Hello and welcome to the *very last* Annual Report of the Durham Local Safeguarding Children Board (LSCB)! This is because over the past year, the LSCB, in addition to focussing on its usual priorities of safeguarding children and promoting their welfare, has transitioned into the new Durham Safeguarding Children Partnership in fulfilment of the legislative requirements of the Children and Social Work Act 2017 and its underpinning guidance, *Working Together to Safeguard Children 2018*. During last year the LSCB was subjected to a Joint Targeted Area Inspection (JTAI), alongside its statutory partners, and therefore also was required to focus on the resulting recommendations.

This report therefore covers three main areas, namely:

- Achievements against 2018/19 LSCB priorities
 - JTAI recommendations, action plan and achievements
- The transition from LSCB to DSCP

In addition to the above, the report will outline the context in which the LSCB operated, its governance and structure, performance monitoring and quality assurance, together with a breakdown of the partnership budget. It will also provide an overview of Serious Case Reviews finalised during last year, and Child Death Reviews undertaken.

If every child in County Durham is to flourish, achieve their potential and live life in abundance, then their safeguarding and welfare are the bedrocks on which this will be built. Our focus as Durham LSCB has been on such outcomes, so that **‘Every child and young person in County Durham feels safe and grows up safe from harm’**.

I would like to thank the many partner organisations and their representatives who were members of the LSCB. They were part of a successful partnership which we will use as a platform for greater multi-agency working and integrated services benefiting our children and their families. I would particularly like to thank those people who lead our subgroups which focussed on LSCB priorities; our Lay Members who gave their time and talents as volunteers, and our Children and Young People Portfolio Holder, the latter two bringing a further level of independent scrutiny. Finally, I would like to thank all those partners involved in the management of the transition process to Durham Safeguarding Children Partnership, and particularly the LSCB Business Unit whose collective talents continuously support the operations of the partnership.

It has been quite a year and I hope this report sheds a little light on the last year of the Local Safeguarding Children Board”.



Michael Banks
Durham LSCB Independent Chair

2. Introduction

Durham Local Safeguarding Children Board has a statutory duty to prepare and publish an Annual Report which describes how our partners safeguard vulnerable children and young people.

Our primary responsibility is to provide a way for the local agencies that have a responsibility in respect of child welfare, to agree how they will work together to safeguard and promote the welfare of children and to ensure that they do so effectively.

Section 3 of the report highlights some statistical information about County Durham and provides a local context for our work.

Section 4 describes the local governance arrangements and structure of Durham LSCB. It also provides information on the new Safeguarding Arrangements that were introduced in 2018/19 through the Children and Social Work Act 2017.

Section 5 highlights some of the achievements and the progress that has been made in the last year as well as reporting on the work undertaken against the 2018/19 priorities.

Section 6 covers our Performance Management Framework and describes the multi-agency audits we have undertaken. It also provides an overview of Serious Case Reviews and the use of restraint in Aycliffe Secure Services Centre.

Section 7 outlines our multi-agency training provision and describes the marketing and communication activity undertaken by the LSCB.

Lastly, **Section 8** identifies the priorities which the new Durham Safeguarding Children Partnership will take forward into 2019/20.

The Annual Report 2018/19 demonstrates the extent to which the functions of the Durham Local Safeguarding Children Board, as set out in the national statutory guidance 'Working Together to Safeguard Children' (March 2015) have been effectively fulfilled.



The information presented in this Annual Report is drawn from a wide range of sources from across the County Durham Partnership. These include the County Durham Integrated Needs Assessment; Lessons Learned from local Serious Case Reviews; the Child Death Review Annual Report; and a range of Durham LSCB strategy documents and action plans.



More Information:

Find out more information by clicking here - [Durham Insight](#)

3. Local Data

County Durham stretches from the rural North Pennines Area of Outstanding Natural Beauty in the west to the Heritage Coastline in the east and is home to a range of national treasures including Durham Cathedral, a UNESCO World Heritage Site.



There are an estimated **526,980 people** living in County Durham (ONS mid 2018 population estimates). Since the previous release (mid 2017 estimates) the population of County Durham increased by 3,318 (0.6%) from 523,662 to 526,980.



The under 18 population in the County has been relatively stable since 2011 at around 101,000.



County Durham is a largely rural county comprising of **21 settlements** with an estimated population of over 5,000 people (estimated from the ONS Mid-2017 Output Area Population Estimates).



Although levels of deprivation in County Durham have improved we are ranked the **75th most deprived area** out of 326 local authorities in England



Child poverty in County Durham is higher than the England average, with **21.8% of children** under 16 years living in poverty (2016).

The county has a very diverse combination of communities ranging from some of the most sparsely populated rural areas in the country through to the larger towns and Durham City; each area with its own needs and aspirations.



Data source: [Office for National Statistics](https://www.ons.gov.uk) (ONS)

Local Safeguarding Data 2018/19 (Provisional)

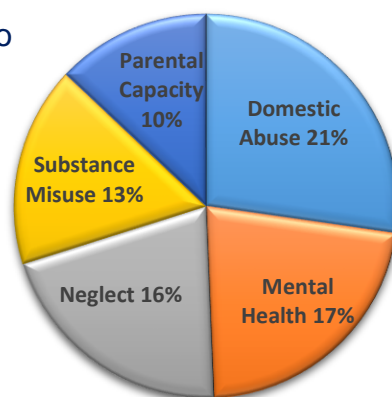
438 children were subject to a Child Protection Plan (50 per 10,000 population aged 0-18). A continued reduction from previous years figures.

Children on a Child Protection Plan for a second or subsequent time, within two years of the previous plan **is 10.3%**

Neglect continues to be the **most frequent reason** for children being placed on a Child Protection Plan in 2018/19.

79.7% of children who were made subject of a Child Protection Plan under five years old were made so due to neglect. This is an 8.1% figure increase from the previous year.

Domestic abuse (21%) continues to be the main parental risk factor leading to children becoming subject of a Child Protection Plan. Mental Health (17%), Neglect 16%), Substance Misuse (13%) and Parental Capacity (10%) are also, significant factors.



833 Children are in the Looked After system.

12 children were in Private Fostering arrangements during this period.

65 children and young people were reported missing from home in County Durham more than once.

148 Child Sexual Exploitation (CSE) referrals. This figure has fallen from previous years and reflects a heightened awareness. Of those targeted **the majority are girls.** Online Grooming is the most common model of CSE.

5 Serious Case Reviews commenced, and 1 Serious Case Review published. **27,745 unique users** visited the LSCB website in 2018/19 with over **114,137-page views.**

A total of **98 multi-agency training courses and events** were delivered and **attended by 1,854 staff** and volunteers.

833

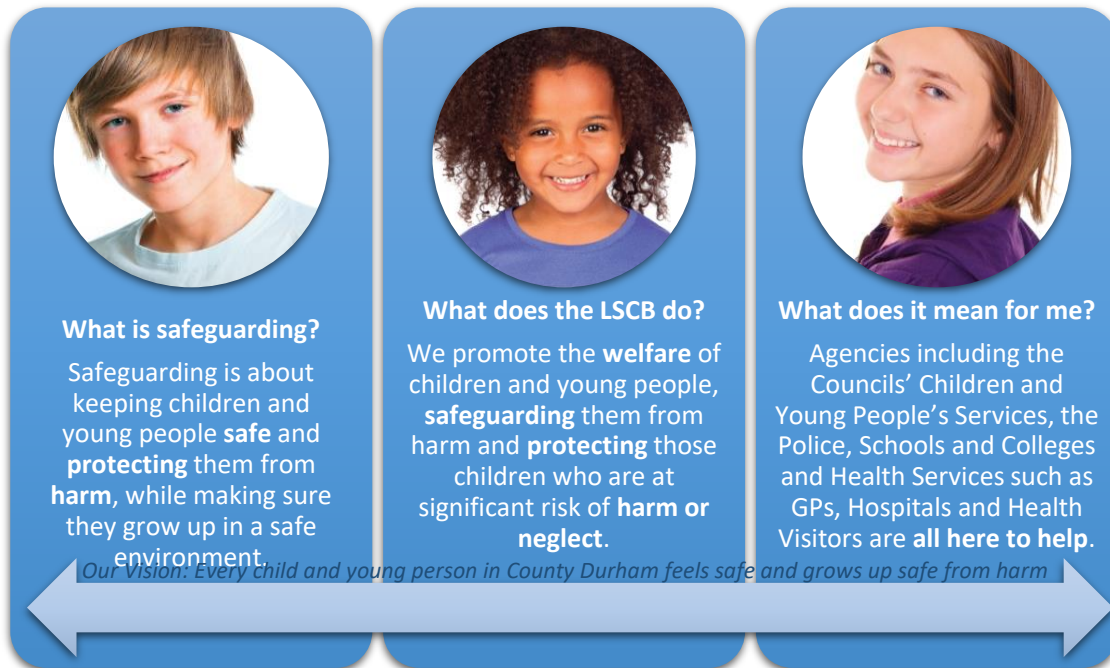
ERASE
EXPLOITATION
ERASEABUSE.ORG



4. Governance and Structure

Local Safeguarding Children Board

Each local area is required by Law to have a Local Safeguarding Children Board. The LSCB is a statutory body established in legislation (Children Act 2004) and works according to national guidance 'Working Together to Safeguard Children 2015'.



What is safeguarding?
Safeguarding is about keeping children and young people **safe** and **protecting** them from **harm**, while making sure they grow up in a safe environment.

What does the LSCB do?
We promote the **welfare** of children and young people, **safeguarding** them from harm and **protecting** those children who are at significant risk of **harm or neglect**.

What does it mean for me?
Agencies including the Councils' Children and Young People's Services, the Police, Schools and Colleges and Health Services such as GPs, Hospitals and Health Visitors are **all here to help**.


Our Vision: Every child and young person in County Durham feels safe and grows up safe from harm

The Durham Local Safeguarding Children Board is chaired by an independent person and meets quarterly. The Board held two development sessions in 2018/19 taking the total number of meeting to six a year. Durham LSCB is supported by the LSCB Business Unit which is hosted by Durham County Council.

The functions of the LSCB were:

- *To develop policies and procedures for safeguarding and promoting the welfare of children in the local area*
- *To communicate and raise awareness of the need to safeguard and promote the welfare of children*
- *To monitor and evaluate the effectiveness of what is done by the local authority and their Board partners individually and collectively to safeguard and promote the welfare of children and advise them on ways to improve*
- *To participate in the planning of services for children in the area of the authority*
- *To undertake reviews of serious cases and advising the local authority and their Board partners on lessons to be learned*

Throughout 2018/19, in accordance with the requirements of the Children and Social Work Act 2017 and its supporting guidance Working Together to Safeguard Children 2018, LSCB partnership arrangements were changed and the new Durham Safeguarding Children Partnership was established on 1st April, 2019.

 **More Information:** Find out more information about [Durham Safeguarding Children Partnership](#)

The new local safeguarding arrangements have been established, led by three Safeguarding Partners and supported by Relevant Agencies. New Child Death Review arrangements were put in place.

Safeguarding Partners are identified as:

- Local Authorities
- Chief Officers of Police
- Clinical Commissioning Groups



Child Death Review Partners are identified as:

- Local Authorities
- Clinical Commissions Groups

During the transition period an Executive Group was established and Safeguarding Partners identified the **Relevant Agencies** required to support local safeguarding arrangements. These include agencies that were former members of the LSCB, but also reach out further to other agencies with safeguarding children responsibilities.

A Transition Project Board was established to co-ordinate five work streams: Governance, Data and Legal; Serious Case Reviews; Child Death Overview Panel; Performance and Quality; Training and Communications.

Durham Local Safeguarding Children Board continued to carry out all of their statutory functions, until the new [Durham Safeguarding Children Partnership](#) became operational on 1st April 2019.

 **More Information:** Find out more information about [Durham Safeguarding Children Partnership](#)

Consultation with Children and Young People

During the development of the new safeguarding partnership arrangements the partners sought to understand the concerns of children, young people and families from across County Durham.

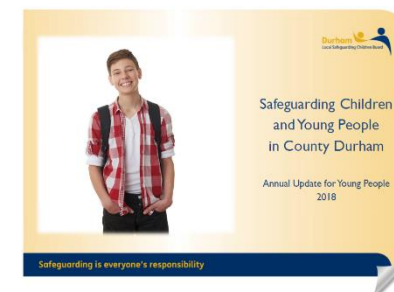
Partners consulted with a range of young people engaged with their service areas such as looked after young people and police cadets. Investors in Children were commissioned to hold two consultation sessions, known as Agenda Days, which were led by young people in the community and a report of the findings by the lead young people was submitted to the LSCB.



Through direct engagement with groups and reviewing recent consultations already undertaken the LSCB was able to identify recurring themes in the concerns of children and young people such as,

- Cyber Safety – specifically social media, online grooming and bullying
- Emotional Wellbeing - Low mood and Anxiety, mental health
- Risky behaviour threatening personal Safety (substance misuse and criminality own or parents)

It is the intention of the new Safeguarding Partnership to utilise this awareness to inform priorities in 2019-2020.



Working across Partnerships

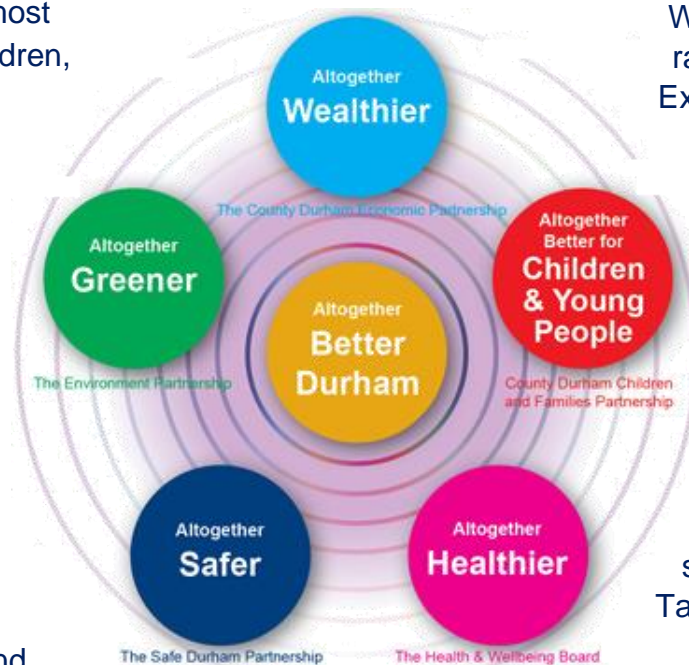
Durham LSCB worked with a wide range of themed partnerships. Together they form the overarching County Durham Partnership and work towards an 'Altogether Better Durham'.

Each of the five thematic partnerships has a specific focus:

- **The Children and Families Partnership** – Works to ensure effective services are delivered in the most efficient way to improve the lives of children, young people and families.
- **The Health and Wellbeing Board** – Promotes integrated working between commissioners of health services, public health and social care services, to improve health and wellbeing.
- **The Safe Durham Partnership** – Tackles crime, disorder, substance misuse, anti-social behaviour and to reduce re-offending.
- **The Environment Partnership** – Improves, transforms and sustains the environment to support the economy and the wellbeing of local communities.
- **The Economic Partnership** – Works to make County Durham an area where people want to live, work, invest and

- visit; whilst enabling residents and businesses to achieve their full economic potential.

Durham LSCB continued to engage and challenge these partnerships where appropriate to safeguard and promote the welfare of children in County Durham.




We have strengthened our joint working with a range of partnerships on shared or similar priorities. Examples include:

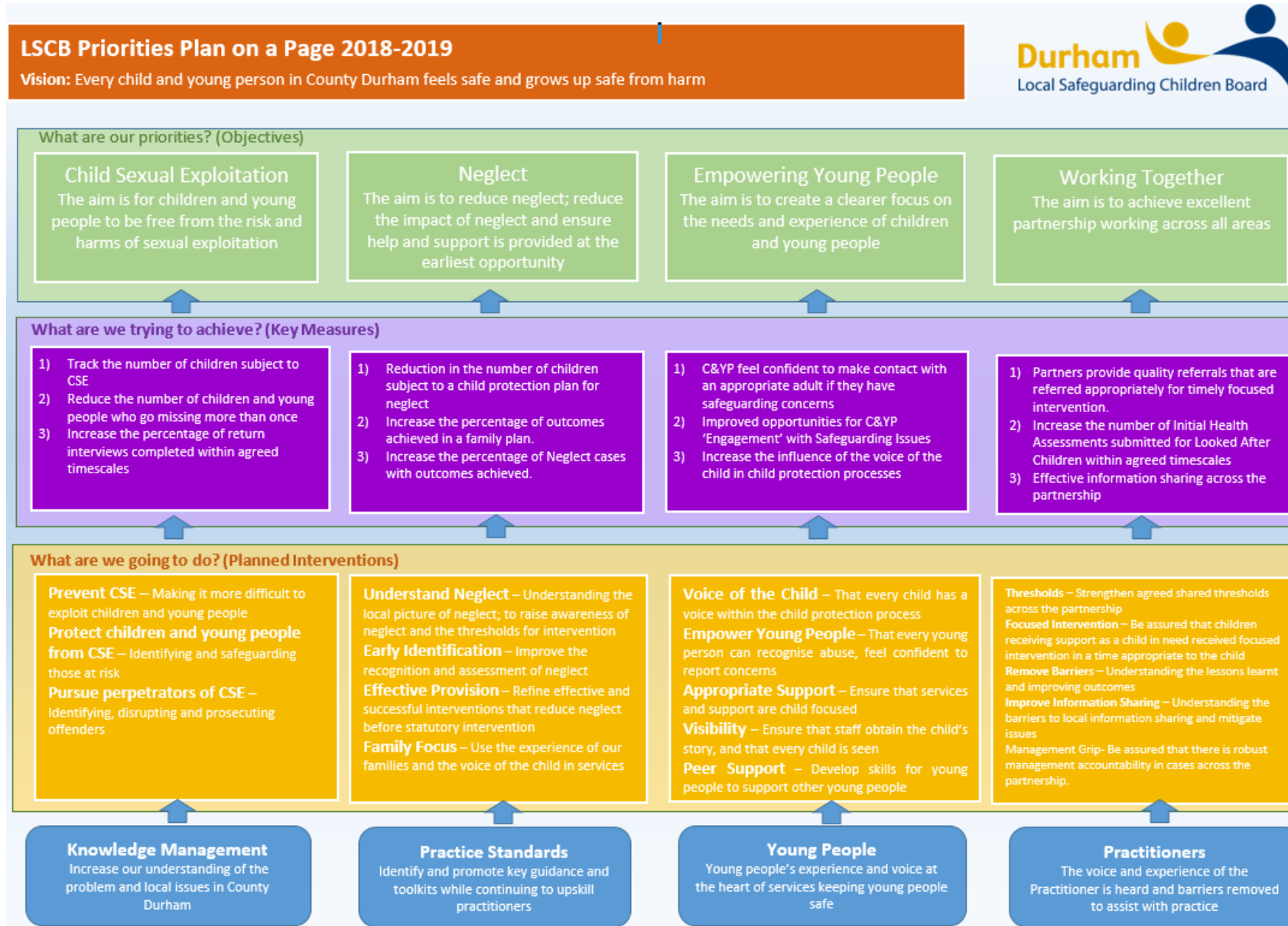
Working with the Safe Durham Partnership in respect of domestic abuse, alcohol misuse, substance misuse and counter terrorism (PREVENT duty). Aligning and improving work within sexual violence, sexual exploitation and female genital mutilation.

Joint working with the Children and Families Partnership to increase the voice of the child through work that includes the student voice survey and the Children's Commissioner's Takeover Challenge.

Greater integration of the mental health and wellbeing agenda with the Health and Wellbeing Board and the development of a range of support aimed to reduce self-harm and suicide.

 **More Information:** Find out more information about [County Durham Partnership](#)

5. Achievements against 2018/19 Priorities



Professional challenge and critical reflection within safeguarding is a professional responsibility. It is a sign of good professional practice, a healthy organisation and effective multi-agency working.

Challenging decisions, practice or actions when concerns arise may alter the professional response when ensuring the safety or well-being of a child or young person or their family.



The LSCB risk register and challenge log is a well-established tool that was used to ensure partners provide mitigating actions to reduce identified risks and acts on challenges made to agencies. This is reviewed at each LSCB Board meeting.

Examples of Professional Challenge

The Child Death Overview Panel (CDOP) challenges agencies if agreed actions are not progressed within timescales and escalation processes are in place. Similarly, the Board monitors actions for learning following a Serious Case Review to ensure actions are progressed and implemented. During 2018 a review of SCR's

identified recurring themes which required strategic and operational intervention.

The LSCB monitored and challenged agencies following s.11 audits which gave assurance that they were complying with their safeguarding responsibilities.

The Joint Targeted Area Inspection in July 2018 challenged how agencies worked together on the front line. It highlighted areas of good practice, but also 46 areas for improvement. The resulting action plan identified 108 actions to improve professional practice.

Professional challenge also takes place at a senior level through a Chief Officers Safeguarding Group which includes the LSCB Independent Chair, Durham County Council, local Clinical Commissioning Groups, Probation organisations, local NHS Foundation Trusts and Durham Constabulary.

This forum allows the opportunity to challenge and share information on safeguarding issues including:

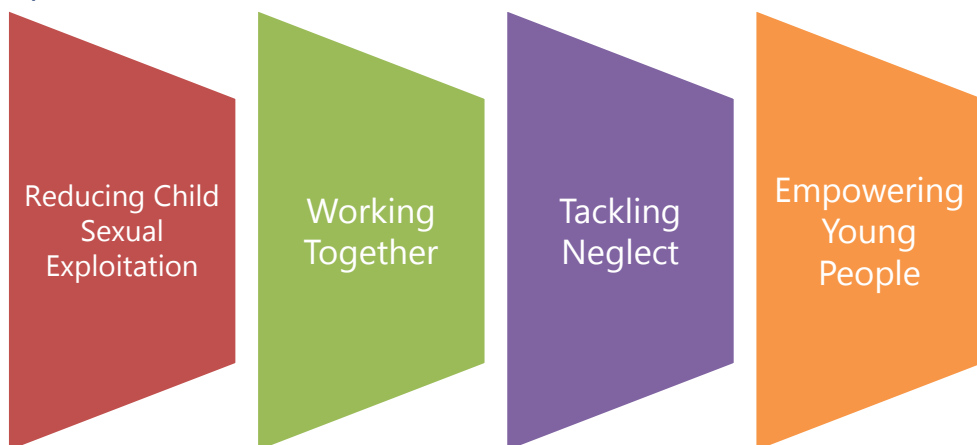
- Learning and recurring themes from Serious Case Reviews and Child Death Reviews
- Quality, impact and development of frontline practice
- Outcomes of multi-agency audits and action plans
- Emerging safeguarding concerns or trends
- Development of new Safeguarding Arrangements

Progress on LSCB priorities 2018/19

LSCB Priorities 2018/19

In setting the priorities for 2018/19 the LSCB Board reviewed the progress on previous priorities and decided to continue to focus on Child Sexual Exploitation; tackling Neglect; Empowering Young People and Working Together.

Click on the tabs below to take you to each priority section in the report.



- **Online Grooming** is the most common model
- Of those young people targeted **80% are girls**
- The **average age** of victims is **12 yrs old**

Priority 1 – Reducing Child Sexual Exploitation

What is Child Sexual Exploitation?

- Child Sexual Exploitation (CSE) is a form of **child abuse**
- It can happen to anyone who is **persuaded, bullied or forced** into having **sex or sexual activity** such as taking and sharing naked photos of themselves
- This can be in return for things like **alcohol, money, drugs** or other gifts
- It can happen **online and face to face**
- It **ruins lives** and has serious **long-term effects** on young people and their families

Multi-agency work is coordinated through the LSCB Missing and Exploited Group (MEG). Its remit is to monitor partner activity and improve the services and responses to reported missing and absent children and the multi-agency response to Child Sexual Exploitation.

Over the past year partner agencies have continued to prove their multi-agency and single agency commitment to this work. Mainstream funding for ERASE Support Workers and PCSOs have been secured. All work is intelligence lead and is coordinated through the Durham LSCB Child Sexual Exploitation Strategy across the following three strands:

- **Preventing** CSE from happening
- **Protecting** those who may be at risk
- **Pursuing** those who may be offending against children

We have widened our Exploitation and Grooming training to agencies not traditionally associated with safeguarding but who come into regular contact with vulnerable children. This includes some innovative work with Arriva Bus Services and Go North East. In addition, we have also engaged with taxi drivers as part of existing licenses. McDonald's restaurants across County Durham benefited from police training in Child Sexual Exploitation.

Operation Artemis focuses on tackling and disrupting offenders and dangerous perpetrators. This complements the work of Operation Makesafe targeting hotspot locations and awareness raising work protecting young people. Staff from six hotels have been trained and posters distributed to other hotels and pubs.



Some of the work we are doing to tackle CSE

- Support the **ERASE brand** - website, media campaign Erase support workers, education materials
- Increased **intelligence around Missing From Education** / Permanent Exclusions / Home Educated
- **National Child Sexual Exploitation Awareness Day**
- **Awareness sessions held on County Lines; exploitation involved in sex working; and how CSE affects boys and men**
- Philomena Protocol launched. Its aim is to protect children who go missing from care homes.
- **Annual Childrens Homes conference held**

The LSCB has supported the police funded **Child Advocacy Centre** pilot aimed at children who are **victims of sexual abuse** and is intended to **improve the victim's journey** from report to court and beyond. In addition a new **'team around the child'** to provide a seamless therapeutic service.



In 2019 we will increase our focus on boys and young men at risk of CSE and identify ways to encourage them to report such abuse. We also recognise that parents want more information to protect their children and we will develop actions to support this.


The Missing and Exploited sub-group of LSCB joined forces with their counterparts in Darlington during 2018. This year it will be re-named Child Exploitation Group to reflect its wider focus of County Lines and Modern Day Slavery.



Learning Point

Listen to our ERASE Support Workers talk about the risk factors of Child Sexual Exploitation.



 **More Information:** Find out more information about [Missing and Exploited Children](#)

Priority 2 – Working Together

What is Working Together?

- The aim is to achieve excellent partnership working across all areas of LSCB business
- Drilling down into problems and finding solutions that work for every agency
- Changing agency culture to improve multi-agency practice following learning from Serious Case Reviews

The Working Together sub-group, having analysed the Practitioner Survey (2018), delivered on the following actions:

- Revised and relaunched the **Thresholds Document**
- Reviewed and revised **Thresholds Training**
- Revised the tools for **Focused Intervention**
- Launched '**You said...we did**' communication.

The Thresholds Document is to be reviewed again in 2019 to reflect the new Durham Safeguarding Children Partnership arrangements.

Practitioner Survey 2019 This was conducted to ensure that the voice and experience of the practitioner is heard and barriers removed to assist with practice.

During 2018/19, our focus was on the following key measures:

- Reduce the average length of time a neglect case is 'live/open'
- Increase the number of Initial Health Assessments submitted for Looked After Children within agreed timescales
- Increase the number of recorded challenges in cases

Some of the work to support Working Together

- **Thresholds:** Strengthen agreed shared thresholds across the partnership
- **Focused Intervention:** Assurance that children receiving support as a child in need, receive focused intervention in a time appropriate to the child
- **Removing Barriers:** Understanding the blockages, implementing lessons learnt and improving outcomes
- **Improve Information Sharing:** Understanding the barriers to local information sharing and mitigating issues



Learning Point

The Working Together group have also been working to implement learning from Serious Case Reviews. This two-minute video asks you to re-think 'did not attend' notifications. (Shared with permissions of Nottinghamshire LSCB)

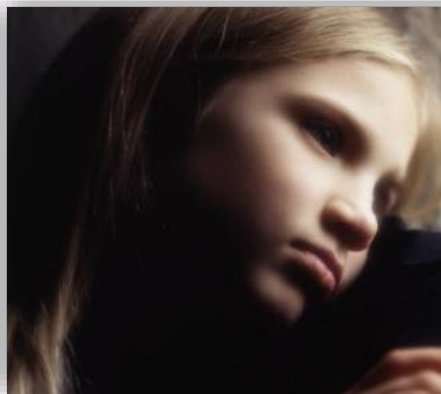


Priority 3 – Reducing Neglect

What is Neglect?

- Child neglect is a **failure** to look after a child and could result in **poor health** or development
- Children (including unborn babies), need food, water, shelter, warmth, protection and health care to **grow and develop**
- Children need their parents or carers to **love and care** for them
- Neglect can also include **physical abuse, emotional abuse and sexual abuse**

Working Together to Safeguard Children 2018 defines neglect as “The persistent failure to meet a child’s basic physical and/or psychological needs, likely to result in the serious impairment of the child’s health or development”. In 2018/19 71.2% (312 of 438) of children on a Child Protection Plan was due to neglect.



Neglect is the **greatest single cause of children needing protection and care** in County Durham

The Tackling Neglect Strategy is aligned to four strategic objectives:

- **Understand Neglect** – To understand the local picture of neglect and the thresholds for intervention.
- **Early Identification** – To improve the recognition and assessment of neglect for children to ensure the most appropriate response is given.
- **Effective Provision** – To offer effective, evidence based interventions that reduce neglect before statutory intervention is required and to act decisively where these do not result in change for the child.
- **Family Focus** – To use the experience of our families and the voice of the child in the development and delivery of services.

Some of the work to tackle Neglect

- **Signs of Safety practice model** was implemented in 2018. To date over 300 childrens services practitioners have been trained in the model and 600 partners have attended briefing sessions
- The Home Environment Assessment Tool (HEAT) has been revised and relaunched to incorporate analysis and action plan
- Analytical support from Public Health Intelligence has provided a local profile of children affected by neglect, child poverty and deprivation. The profile has been shared with the Child Poverty Working Group who have developed and implemented a wide range of interventions.

The Neglect Group in conjunction with Public Health England has established a working group to raise awareness of the impact of poor oral health and dental neglect. A 'Was not brought' pathway is to be developed and embedded.

The Neglect Group is building on the learning from a National Joint Targeted Area Inspection on Neglect of Older Children. A strategy is under development for working with older children affected by neglect utilising a trauma informed approach.

Where the right support and intervention is provided to a child or young person it can have a dramatic positive effect on them and their life opportunities.



Learning Point

Neglect Video: Michelle's Story
This is the story of Michelle and her experience of neglect as she was growing up. Click the picture to watch the video.



Durham LSCB recognise that although good progress has been delivered by services to tackle neglect we need to continue this focus to support children and young people who suffer the consequences of growing up in neglectful circumstances. The Neglect Action Plan and performance framework has therefore been reviewed for 2019/20 for the new Durham Safeguarding Children Partnership.

 **More Information:** Find out more information about [Neglect](#)

Priority 4 – Empowering Young People

What is Empowering Young People?

- To increase the **voice of the child** to make sure that services take **young people's views and opinions** into account when they plan services
- Providing **education, resilience and 'up-skilling'** opportunities for young people **in safeguarding and risk awareness**
- Staff working with children and young people want to know **what they think** and how things can be made **better for them**

The Empowering Young People subgroup brought many partners together to create a 'performance scorecard' that enables services to define and develop better ways of engaging with young people.

The subgroup considered the question: "What does good look like?" and took steps to identify what changes needed to take place to achieve good in terms of the following key areas:

- What is required to increase confidence and assurance of C&YP who have safeguarding concerns
- Improved current engagement practice is identified and shared by partner agencies
- The influence of the voice of the child is improved in processes including child protection conferences
- The influence of the voice of the child in relation to neglect and other key priorities (eg: bullying) is improved.

The subgroup worked to principles rooted in Article 12 of the United Nations Convention on the Rights of the Child: “you have a say in decisions that affect you.”

Our work with children and young people continues to be recognised by ‘Investors in Children’ as good practice.

To increase young people’s awareness of safeguarding issues a safeguarding engagement module for C&YP was co-produced between local authority officers, partner agencies and teachers and children in schools.

It was trialled between December 2017 and February 2018 and is now available via the LSCB website for use in all schools.

The group identified greater scope for the development of initiatives that encourage meaningful participation by children and young people in the academic year 2019/20.

We continue to increase the **visibility and voice of the child** and this year we have focused on improving the influence of children in the Child Protection processes, challenging services to develop and evidence new approaches to engaging young people in the conference process.



6. Performance Monitoring and Quality Assurance

Durham LSCB continually monitors the quality, timeliness and effectiveness of multi-agency practice through the Performance Management Framework.

Where gaps are identified, implications for the LSCB are considered and any agreed actions are monitored through the LSCB risk register and challenge log.

The LSCB sub groups (aligned to priorities) have an agreed action plan and performance scorecard. Performance and progress is reported at the sub group level and collated through the Quality and Performance Group up to the LSCB Board to monitored and challenge.

Ongoing Quality Assurance

- Monitor **partner compliance** with the statutory requirement to have effective safeguarding arrangements in place (Section 11)
- Carry out **multi-agency audits** and identify lessons to be learned and make recommendations for future improvement and feeding into LSCB training
- Multi-agency audit reports to inform the LSCB Board of the **quality of work** being undertaken and its impact on outcomes for individual children and young people
- Overview of **multi-audits** to monitor and review practice
- The use of a series of **performance scorecards**

Serious Case Reviews are published on the Durham LSCB website for a period of 12 months. There is currently one published Serious Case Review on the website.

Outcomes and findings feed into our performance structures to promote a culture of continuous learning and improvement across the partner agencies of the LSCB.

The Child Death Overview Panel for Durham and Darlington share their key learning from child deaths. They monitor and challenge agencies for the completion of recommended identified actions and publish a separate annual report. Find out more information about [Child Death Reviews](#).

Multi-agency Audits

Last year the LSCB returned to calling multi-agency partners together to review records of practice.

Partners agreed that this process should be led by a practitioner related to the specific issues being audited to assure and challenge responses received.

A Section 11 Audit is Durham LSCB's primary audit to examine the safeguarding arrangements within a broad range of organisations and provides the Board with assurance that agencies are doing what they can to ensure the safety and welfare of children and young people.

The Section 11 audit conducted in 2018/19 utilised a web-based method for collecting 200 audit responses from GPs, schools and the member organisations of the LSCB. This collated audit contained more than 5637 separate pieces of information including responses

from more than 138 schools and academies from across County Durham.

90% of the schools who contributed to the Section 11 said that they used the audit to prepare for their own Education reviews. 52 GP Practices also responded to the Section 11 with 92% of their answers confirming relevant safeguarding expectations were met and Named GPs for Safeguarding offering support to enable further improvements

Agencies identified a total of 63 separate actions which, with the findings of the audit, were compiled into a report and submitted for review and monitoring by the LSCB.

To free up resources to support the JTAI audits the LSCB Board agreed to conduct Section 11 audits on a two yearly cycle with the next Section 11 audit to be completed in 2020/21.

Other multi-agency audits undertaken in 2018/19

- Child Sexual Exploitation Cases
- Strategy Meetings
- Child Protection Plans
- Practitioner Survey
- Section 11

Joint Targeted Area Inspections

This is a new multi-agency inspection to assess how agencies work together in an area to identify, support and protect vulnerable children and young people.

A 'JTAI' includes inspectors from Ofsted, Care Quality Commission (CQC), Her Majesty's Inspectorate of Constabulary (HMIC) and Her Majesty's Inspectorate of Probation (HMIP) and reaches across the partnership.

The JTAI reviewed safeguarding on the theme of Domestic Violence and findings from this inspection led to an action plan with more than 100 actions to address specific areas for improvement.

The LSCB has responsibility for the oversight of the action plan and to ensure multi-agency participation.

Restraint

In conjunction with Durham County Council, Durham LSCB monitors the use of restraint at Aycliffe Secure Services Centre.

Many of the young people at Aycliffe Secure Services Centre are placed there by Local Authorities and Courts outside of the Durham area. Since 2011 and in line with 'Working Together' guidance we have reported on the use of restraint.

County Durham is amongst a small number of Local Authorities who have secure services within its boundaries.

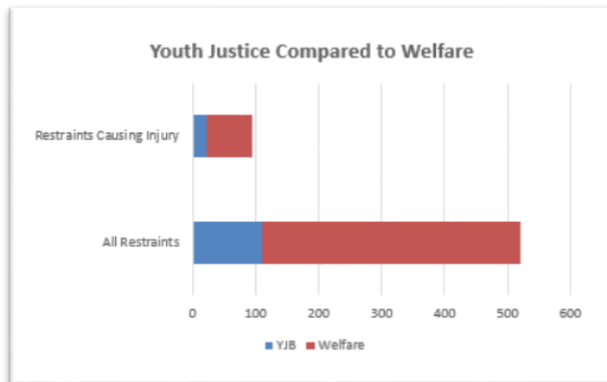
Aycliffe Secure Services Centre houses a changing population of young people (aged 11-17) with complex and challenging behaviours. The Young People have been referred through the courts because they are a risk to themselves or others, or because there is a concern about their involvement with criminal activities.

Injuries as result of restraint are graded using a set criteria

- **Level 1 – Minor Injury** - such as red marks on the skin, welts, superficial cuts and scratches, bruises which do not require medical treatment, including first aid
- **Level 2 – Minor Injury** - such as significant cuts, scratches, grazes, bloody noses, concussion, serious bruising and sprains where medical treatment is given by staff/nurse
- **Level 3 – Serious Injury requiring hospital treatment** - includes serious cuts, fractures, loss of consciousness and damage to internal organs

Aycliffe's implementation of a Restraint Minimisation Strategy continues alongside a range of alternative approaches to minimise the use and impact of restraint. As a result of these initiatives the majority of injuries are graded at Level 1.

There was a total of 520 incidents which required restraint during 2018/19. This is down from 531 in 2017/18. There were 94 injuries because of restraint, down from 108 in the previous year. There was also a slight increase in the average monthly occupancy during 2018/19.



Analysis shows an increased level of restraint and associated injury occurred in first six months of 2018/19. 69% of all injuries occurred in this period. This is due to a combination of an improved reporting

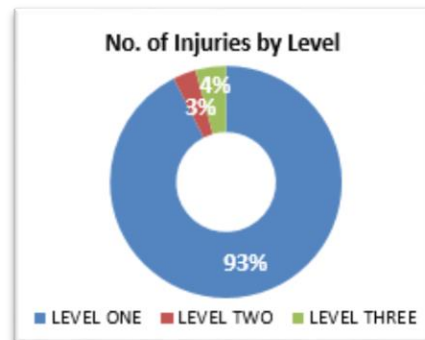
process that captures more information and an increase in occupancy with a higher proportion of young people accommodated for welfare reasons.

These young people often have more complex needs including emerging mental health and personality disorders.

The number of restraints reduced during the following six months and was lower than the same period during the previous year. The number of injuries as result of restraint also reduced by more than half during this period and included one level 2 and one level 3 three injury.

93% of injuries were graded at Level 1, with 3% graded at Level 2 and the remaining 4% at Level 3

There were four Level 3 restraint related injuries.




Throughout 2017/18 a Senior Manager from the Secure Centre has provided a quarterly restraint report to the LSCB's Quality and Performance sub group and plans for further scrutiny of individual incidents are in place for 2019/20.

Residents at Aycliffe Secure Childrens Home

- **Youth Justice Board** – Sent by a Youth Court to fulfill an order received as a result of offending behaviour.
- **Welfare** – Resident in a secure environment, usually as a result of a court order but not necessarily relating to offending behaviour. These young people are 'Looked After' by the local authority but they have additional needs that require a secure environment or facilities outside the scope of care options available within a non-secure care environment.

79% of restraints were applied to young people who are resident at Aycliffe under the category of 'Welfare'. This group also accounts for 76% of the injuries sustained because of a degree of restraint being applied.

 **More Information:** Find out more information about [Aycliffe Secure Services Centre](#)

Serious Case Reviews

Durham LSCB have instigated five Serious Case Reviews in 2018/19 and published one Serious Case Review Report.

The introduction of “7 minute briefings”, short documents available on the LSCB website outlining key aspects of specific issues, provided an opportunity for professional and critical reflection of key messages from published Serious Case Reviews.



This year we have developed new guidance and supporting materials to comply with the new arrangements as outlined in Working Together to Safeguard Children 2018




The LSCB continued to implement the recommendations from Serious Case Reviews. Action plans are monitored by the LSCB Business Unit and reviewed by the LSCB Board through the six-monthly update report. Going forward this function will be carried out by the Durham Safeguarding Children Partnership Executive group.

Recurrent themes of published SCRs

- Bruising / Injuries to non-mobile babies
- Sexually Harmful Behaviour
- Non-compliance with Child Protection Procedures
- Blockages in Communication and Information Sharing
- Lack of Holistic and Robust Assessments
- Lack of Professional Curiosity and Triangulation of Information

We will continue to host an annual Serious Case Review themed learning conferences to contribute to the professional development of staff and improve their understanding of local safeguarding concerns and themes.

 **More Information:** Find out more information about [Serious Case Reviews](#)

Policy and Procedures

The online version of the Durham LSCB Multi-Agency Child Protection Procedures provides a web based solution that is fully searchable and allows the user to access content from a wide range of devices. We undertake reoccurring six-monthly reviews to keep the procedures up-to-date with local and national changes.

Website link - www.proceduresonline.com/durham/scb

Professionals should add the link above into work related phones, smartphones, tablets and computers to link directly to the procedures when needed.



The Child Death Overview Panel has been reviewed and is compliant with new Working Together to Safeguard Children guidance 2018. Membership has been reviewed to include a GP at each meeting, and lay member engagement during thematic reviews. To ensure robust scrutiny and challenge, Public Health England has agreed to work across four CDOPs in the north East of England, undertaking thematic reviews of: suicide and deliberate self-harm; sudden unexpected deaths; trauma and neonatal deaths. Also, County Durham and Darlington CDOPs will share joint learning with Tees Valley CDOP via twice yearly challenge review meetings.

Other procedures and guidance updated in 2018/19

- New Tackling Neglect Strategy
- Updated Neglect Practice Guidance
- Updated Thresholds Document
- New Children's Services Referral Form
- Updated Home Environment Risk Assessment Tool (HEAT) and Guidance
- New HEAT Analysis and Action Plan
- Updated Children and Families Outcomes Framework and Practice Toolkit

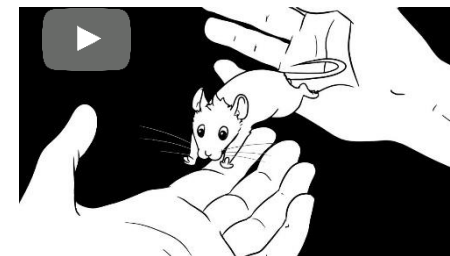
Independent Inquiry into Child Sexual Abuse
We have engaged with the Independent Inquiry into Child Sexual Abuse and supplied information on the work we do to protect children.



In addition, we have actively promoted the Truth Project; this offers the opportunity for victims and survivors to share their experience and be respectfully heard and acknowledged. By doing so, they are helping the inquiry to better understand the long-term impact of abuse.

Learning Point

Watch a two-minute video about the Truth Project.



7. Training and Communication

Durham LSCB offered 10 core courses in 2018/19 as part of the multi-agency training programme. 22 bespoke training events were delivered to single agencies.



- A total of 82 courses were delivered in 2018/19. The courses were attended by a total of 1,670 staff and volunteers.
- A full total of 98 multi-agency training events were delivered and attended by a total of 1,854.

The training courses received very positive feedback with 93% of attendees marking the training as good or excellent.



Impact Analysis – Of the responses received 86% confirmed the learning from the course had impacted on their practice and 66% believed that it had improved outcomes for the children and families they work with

E-learning Courses

Durham LSCB provide access to a full range of e-learning courses through the Virtual College 'total package'.



This allows partners the ability to offer up-to-date safeguarding training to all staff through the unlimited licences available for each course. Courses include:


- Safeguarding Children and Young People from Abuse by Sexual Exploitation
- Domestic Abuse
- Awareness of Child Abuse and Neglect
- Collaborative Working: A Whole Family Approach



'This training day has helped me to understand the single assessment process and what a good assessment looks like.'

In 2018/19:

- 6,665 e-learning courses have been completed
- 97% of those completing evaluations stated they would recommend the course to a friend or colleague

 **More Information:** Find out more information about [LSCB Training Programme](#)

Marketing and Communications Activity

Marketing and communications work is delivered through the Durham LSCB Website and is the main channel and access point for local safeguarding information and materials and to support local and national campaigns.



Website stats - April 2018 to end of March 2019

- 27,745 users
- 46,198 sessions / visits
- 114,137 page views

Printed materials to raise awareness of safeguarding children were distributed to contact points such as Customer Access Points, GP surgeries, Libraries, Children Centres, Day Nurseries, Police Stations and the Neighbourhood Watch Network.



The LSCB website is the main. Content is refreshed regularly with the Toolkits and Guidance for Practitioners page, making a Referral page and Training Programme being the top three pages visited.

Campaigns we supported in 2018/19

- Children's Commissioner's Takeover Challenge
- Child Sexual Exploitation Awareness Day
- Independent Inquiry into Child Sexual Abuse Truth Project
- Internet Safety Day
- World Social Worker Day
- Alcohol Awareness Week
- International Day for Elimination of Violence Against Women and Girls

2018/19 was a transition year from LSCB to DSCP. The consultation process included two LSCB partnership development days to inform the vision and values; structure and meetings model; and scrutiny arrangements for the new partnership.

Two awareness sessions and consultation events were held for Relevant Agencies. The website was updated to reflect the anticipated changes to the partnership. Quarterly LSCB newsletters provided partners and service users with updates and future plans.

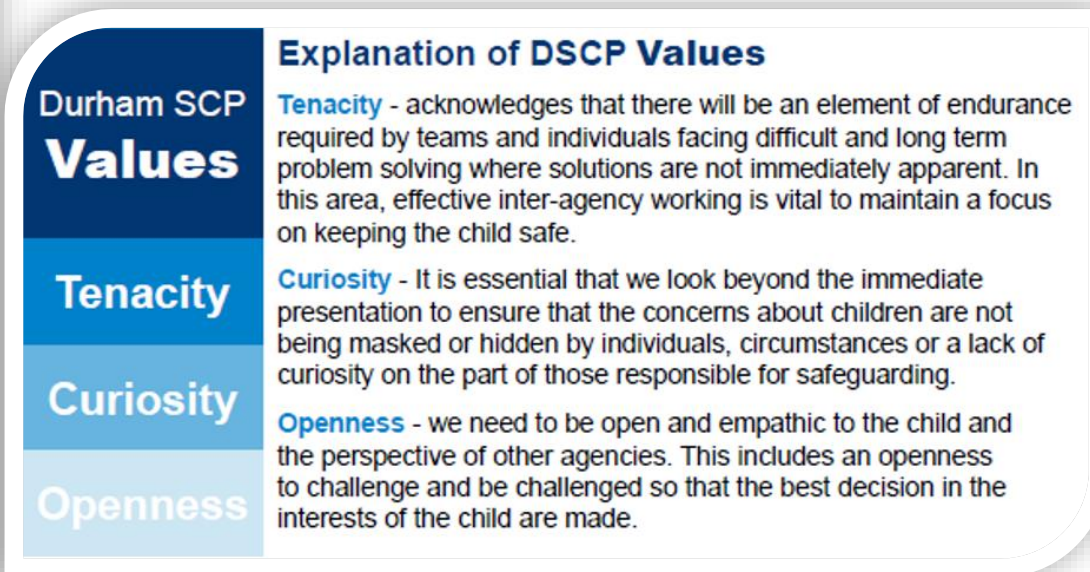
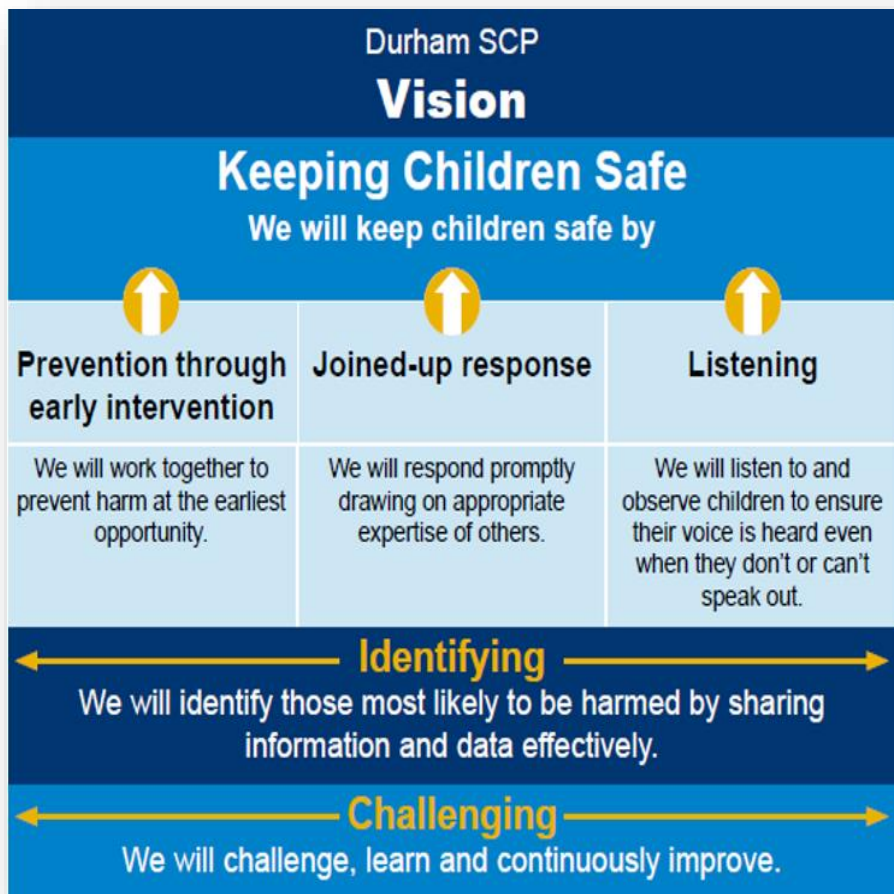
Learning Point

Watch Chris speak about the storyline and how it has helped to raise the issue of child sexual exploitation across the country.



8. Future Priorities

A balanced scorecard of indicators, based on our Vision and Values, will incorporate, for example how we monitor our performance against priorities such as neglect and child exploitation.



Appendix 1 – LSCB Membership

Durham LSCB Membership

- The Board is chaired by an **independent person** commissioned by the Durham County Council Chief Executive
- **National Probation Services** – represented by the Head of Durham NPS
- **Durham Tees Valley Community Rehabilitation Company** – represented by the Head of Services County Durham and Darlington
- **North Durham, Durham Dales, Easington & Sedgefield Clinical Commissioning Groups** – represented by the Director of Nursing (*Vice-Chair of Durham LSCB*)
- **Designated Nurse Safeguarding Children and Looked After Children**
- **Designated Doctor for Safeguarding Children**
- **NHS England** – represented by the Director of Nursing for the Clinical Commissioning Groups
- **Tees, Esk & Wear Valleys NHS Foundation Trust** – represented by the Associate Director of Nursing (Safeguarding)
- **County Durham & Darlington NHS Foundation Trust** – represented by the Associate Director of Patient Experience & Safeguarding

- **North Tees & Hartlepool Hospitals NHS Foundation Trust** – represented by the General Manager Nursing and Professional Standards
- **Harrogate & District NHS Foundation Trust** – represented by the Head of Safeguarding Children
- **City Hospitals Sunderland NHS Foundation Trust** – represented by the Associate Director of Safeguarding
- **Cafcass (County Durham)** – represented by the Service Manager
- **County Durham Council** represented by:
 - Corporate Director, Children and Young People's Services
 - Head of Early Help, Assessment & Safeguarding
 - Head of Adult Care
 - Head of Education
 - Strategic Manager – Children's Services Reform & Youth Offending Service
 - Director of Public Health County Durham
 - Strategic Manager – Housing Solutions
- **National Offender Management Service** – represented by the Regional Safer Custody Lead
- **Durham Constabulary** – represented by the Force Lead for Safeguarding (Superintendent Level)
- **The Voluntary & Community Sector** – represented by the Voluntary Sector Representative (Durham Voice)

- **Schools** – represented by:
 - Durham Association of Secondary Heads
 - Durham Association of Primary Heads
 - Durham Association of Special Schools
- **Further Education** – represented by:
 - Head of Student Services, Bishop Auckland College
 - Advice Support Careers Manager, New College Durham
- **Lay Members** – represented by three members of the community whose remit is to challenge the LSCB on the accessibility by the public, children and young people of its plans and procedures
- **Lead Member** – represented by the Portfolio Holder for Children and Young People’s Services (participant observer)
- **Faith Communities** – represented by the Safeguarding Lead for Durham Diocese

Contact Details	
Durham LSCB	03000 265 770
Durham County Council	03000 260 000
Durham Constabulary	101
County Durham & Darlington NHS Foundation Trust	0191 333 2333
North Durham Clinical Commissioning Group (CCG)	0191 389 8600
Durham Dales, Easington & Sedgefield CCG	0191 371 3222
Tees, Esk & Wear Valleys NHS Foundation Trust	01325 552 000
North Tees & Hartlepool Hospitals NHS Foundation Trust	01642 617 617
Harrogate & District NHS Foundation Trust	01423 885 959
City Hospitals Sunderland NHS Foundation Trust	0191 565 6256
NHS England North	0113 825 1609
Cafcass (County Durham)	0300 456 4000
Durham Tees Valley Community Rehabilitation Company	0808 168 4848
National Probation Service North East Division	01325 246 260
National Offender Management Service	0300 047 6325
Schools and Colleges	web link only
Voluntary and Community Sector	web link only

LSCB Advisors

The Board is advised by:

- A member of Durham County Council Corporate & Legal Services nominated as the Board’s legal advisor
- The Durham LSCB Business Manager
- Head of Partnerships & Engagement, Durham County Council
- Strategic Manager – Partnerships, Durham County Council

Appendix 2 – LSCB Staffing and Budget

Staffing

The LSCB is supported by the following officers:

- LSCB Business Manager
- LSCB Quality & Performance Coordinator
- LSCB Strategy and Development Officer
- LSCB Training Coordinator
- LSCB Admin Coordinator
- LSCB Administrator
- LSCB Admin Apprentice

LSCB Budget

The financial contributions from partner agencies are as follows:

Partner	2017/18 Contribution	2018/19 Contribution
Durham County Council	£171,604	£171,604
Clinical Commissioning Groups	£95,097	£95,097
Tees, Esk & Wear Valleys NHS Foundation Trust	£2,680	£2,680
County Durham & Darlington NHS Foundation Trust	£2,680	£2,680
North Tees & Hartlepool NHS Foundation Trust	£2,680	£2,680
Harrogate and District NHS Foundation Trust	£2,680	£2,680
Durham Constabulary	£29,285	£29,285
Durham Tees Valley Community Rehabilitation Company	£1,340	£1,340
National Probation Service	£2,032	£2,032
Further Education Colleges	£2,100	£2,100
Cafcass	£550	£550
Total	£312,728	£312,728

Durham LSCB Annual Report 2017 / 2018 / 2019 - Safeguarding Children in County Durham

Durham Local Safeguarding Children Board has a statutory duty to prepare and publish an Annual Report which describes how our partners safeguard vulnerable children and young people in County Durham. Our primary responsibility is to provide a way for the local organisations that have a responsibility in respect of child welfare, to agree how they will work together to safeguard and promote the welfare of children and young people in County Durham and to ensure that they do so effectively.

The children and young people of County Durham are at the heart of what all LSCB partners do and our vision of **'Every child and young person in County Durham feels safe and grows up safe from harm'** continues to drive services forward.

This Annual Report gives an account of the Board's work over the past year to improve the safety and wellbeing of children and young people. The report reflects the activity of the LSCB and its sub groups against its priorities for 2018/19. It covers the major changes and improvements of our partners' service delivery, where they link with the Board's overall strategies and the impact it has had. It also reports on the Serious Case Reviews undertaken and identifies the priorities to be taken forward into 2019/20.

Equality and Diversity

Durham LSCB strives to promote equal access to safeguarding services, particularly for those children who are unable to communicate, due to their age, disability or first language.

DSCP Business Unit
County Hall
Durham
County Durham
DH1 5UJ

Email: dscpsecure@durham.gov.uk

Tel: 03000 265 770

A copy of this report is available on www.durham-scp.org.uk

